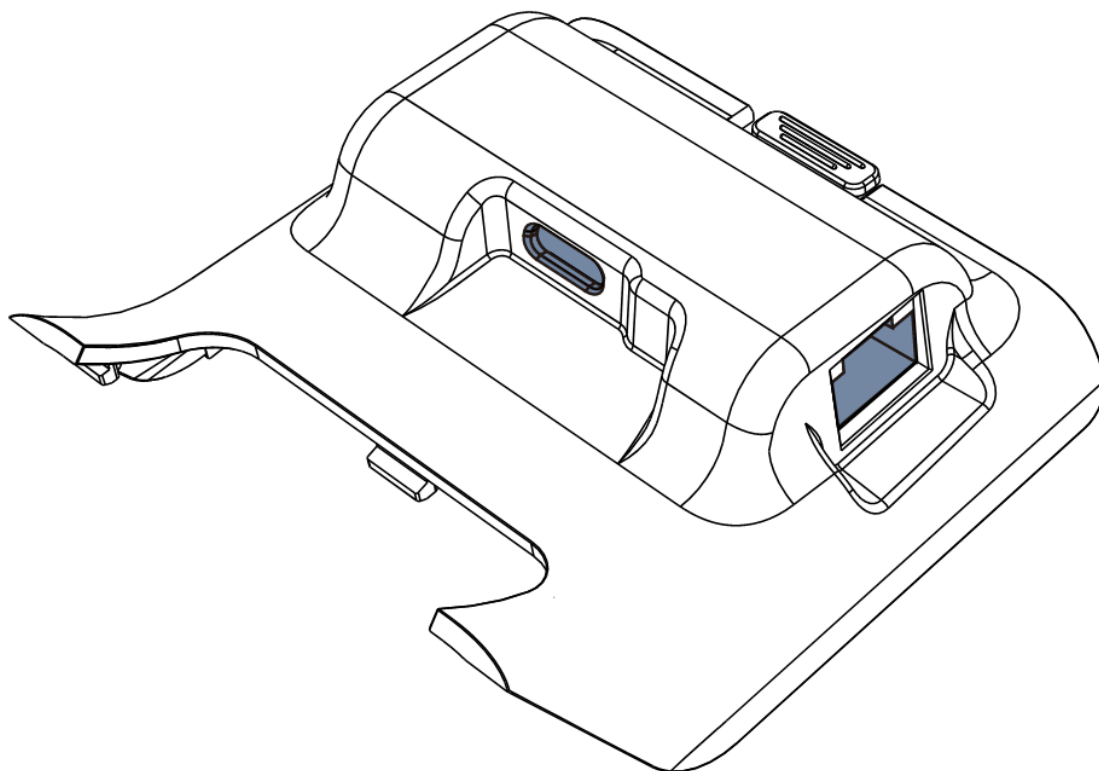


# ingenico

## Functional Battery Door

### User Guide



[www.ingenico.com](http://www.ingenico.com)

13-17 rue Pagès, 92150 Suresnes – France

Banks and Acquirers International Holding, SAS / 814 767 216 RCS Nanterre



UYS01000626



# Contents

1. Product Introduction .....	2
1.1 Open Package Inspection .....	2
1.2 Device Introduction.....	3
1.3 Interface definition.....	3
2. Product Technology Features.....	4
2.1 Product Technology Specifications.....	4
2.2 Environmental Conditions.....	4
2.3 Product Functions .....	4
3. Installation .....	5
3.1 Connect Functional Battery Door with DX4000 .....	5
4. Notes .....	7
5. Delivery and Storage .....	7
6. Standard.....	7

## 1. Product Introduction

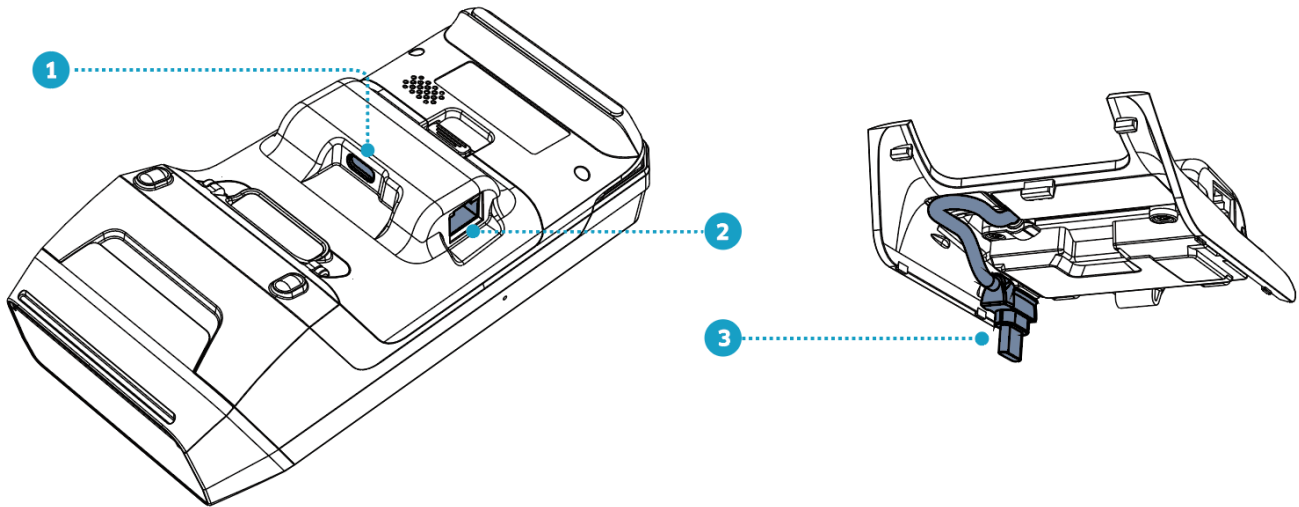
### 1.1 Open Package Inspection

Open the package to check if there are any disabling masks or transportation damage in the terminals and fittings.

#### Procedures:

- 1) Open the package
- 2) Check the following items
  - Functional Battery Door
  - Product user guide
- 3) Save the transportation package and packing material for second use.

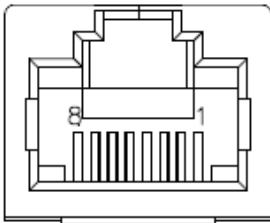
## 1.2 Device Introduction



1. USB-TYPE C Power Input	2. RJ45 Network Interface
3. USB TYPE-C Port	

## 1.3 Interface definition

### 1) RJ45 interface



Sequence	RJ45 Signal
1	TX+
2	TX-
3	RX+
4	NC
5	NC
6	RX-
7	NC
8	NC

## 2. Product Technology Features

### 2.1 Product Technology Specifications

Port	<ul style="list-style-type: none"><li>• USB TYPE-C power input port</li><li>• RJ45 network port, support 10M/100M</li><li>• USB TYPE-C port supporting USB 2.0</li></ul>
Power	<ul style="list-style-type: none"><li>• Power input: 5.0V DC 2.0A (Power input should be compatible with LPS)</li></ul>
Weight	<ul style="list-style-type: none"><li>• Net Weight: 35g</li><li>• Gross Weight: 55g</li></ul>

### 2.2 Environmental Conditions

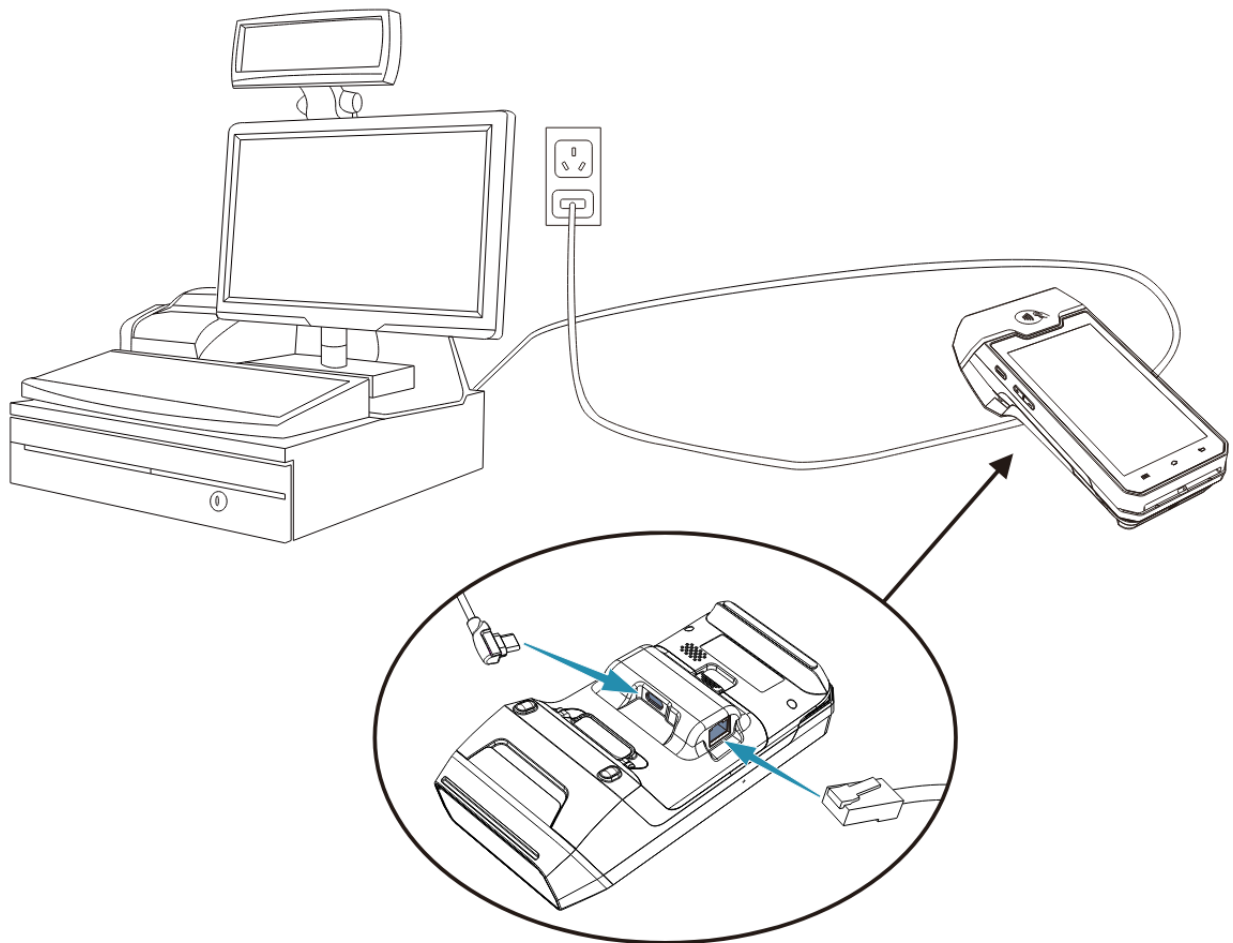
Environmental conditions for running, storing and delivering the product :

Temperature	Running	0°C ~ 40°C/ 32°F ~ 104°F
	Storage and Delivery	-20°C ~ 70°C/ -4°F ~ 158°F
Humidity	Running	10% ~ 90%
	Storage and Delivery	5% ~ 90% (40°C) / (104°F)
Atmospheric pressure		86kPa ~ 106 k Pa; Below 2000 meters above sea level

### 2.3 Product Functions

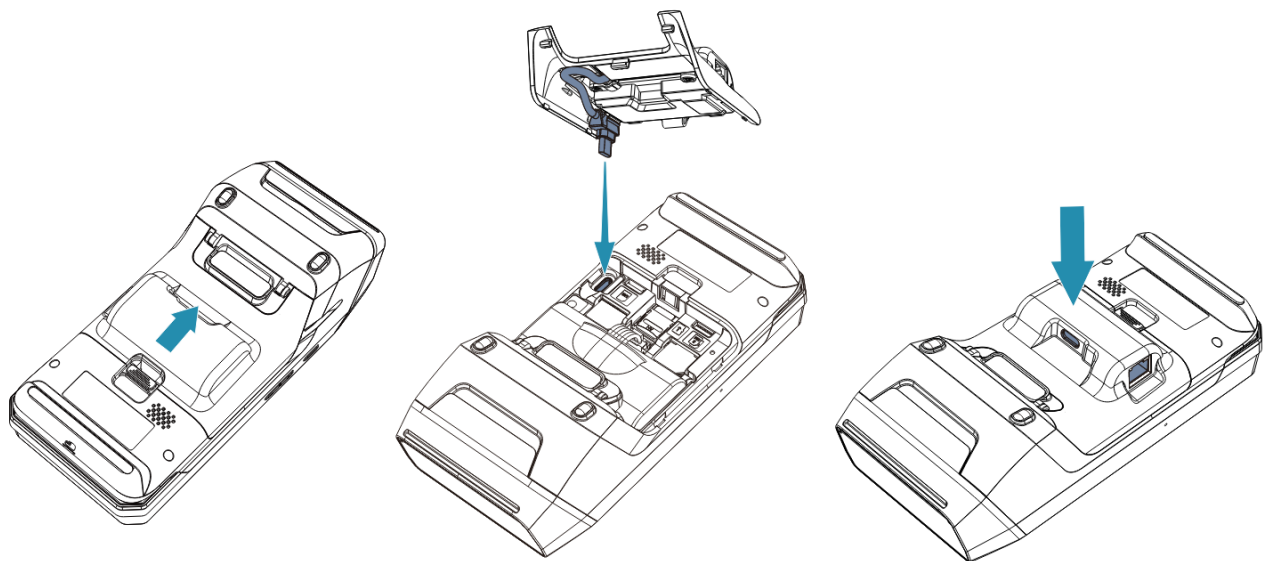
The Functional Battery Door has two main functions as below:

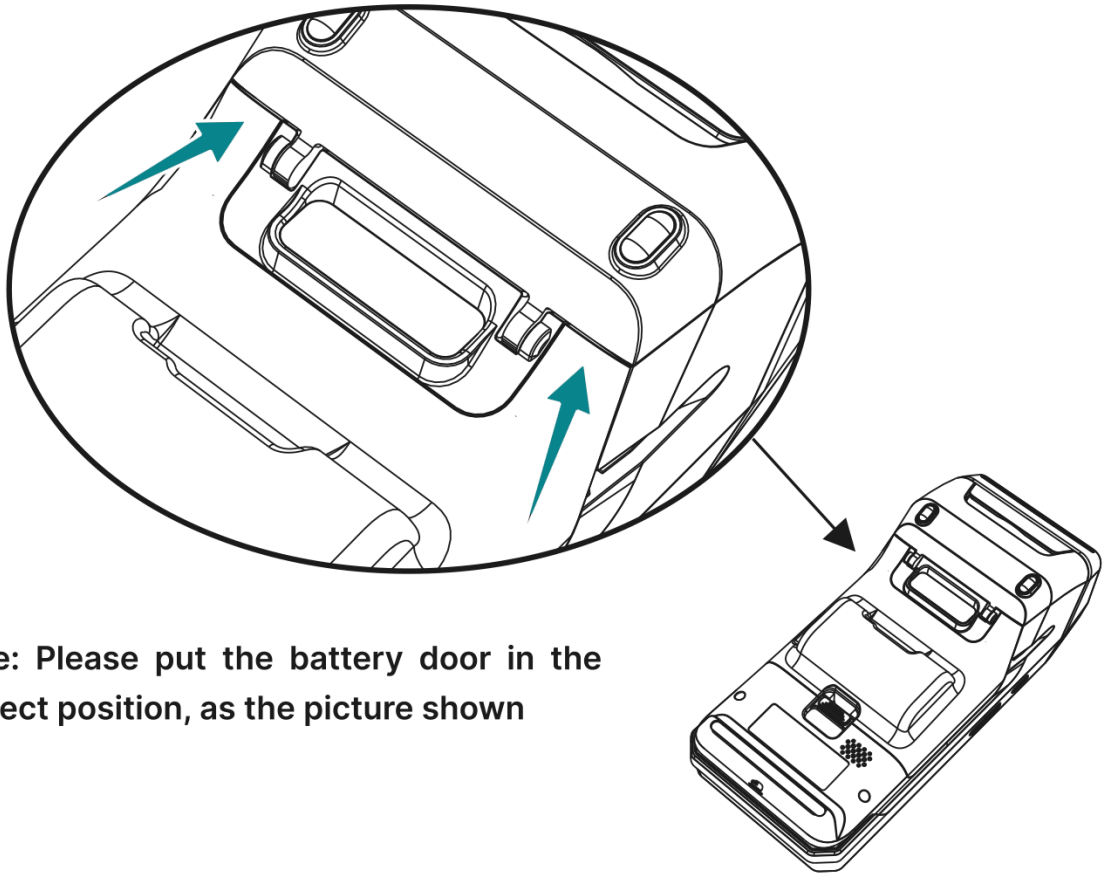
- DX4000 charging: Connect the Functional Battery Door with the power adapter, then connect DX4000 with the Functional Battery Door to get charged.
- Serves as extended communication ports of DX4000: Network port.



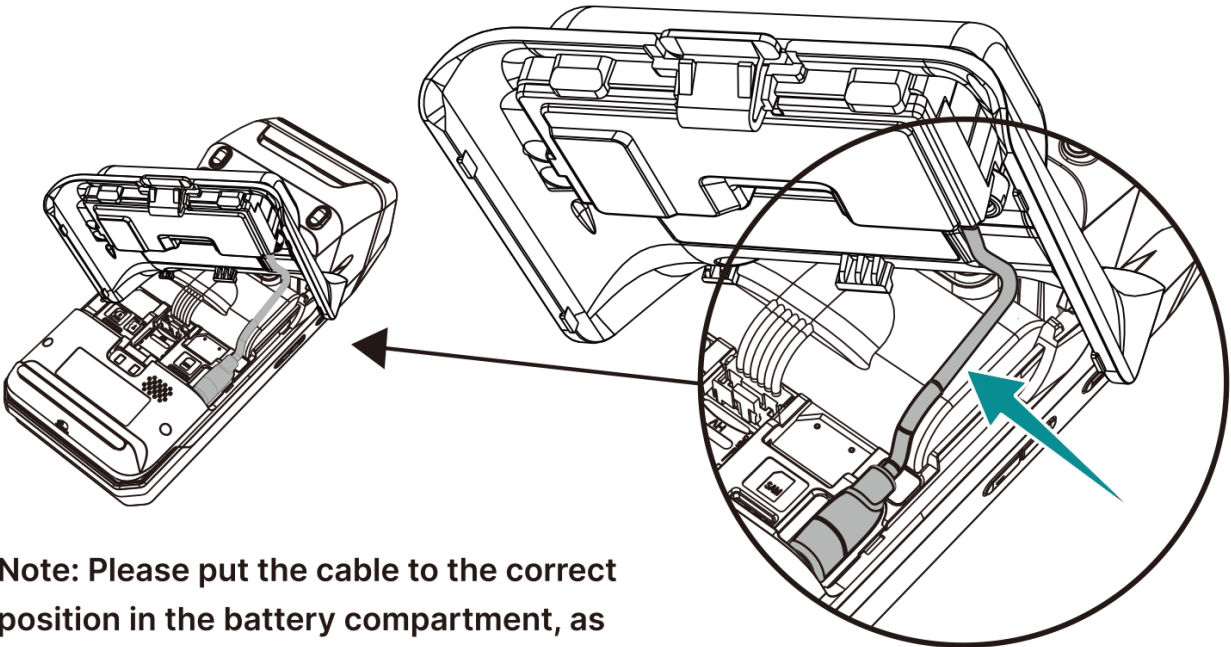
### 3. Installation

#### 3.1 Connect Functional Battery Door with DX4000





**Note: Please put the battery door in the correct position, as the picture shown**



**Note: Please put the cable to the correct position in the battery compartment, as the picture shown**

## 4. Notes

- Prevent the terminal from sun exposure, high temperature, moisture and other mean conditions.
- Cut off the power before cleaning the device and wipe the main body with dry cloth.
- When the following abnormal phenomena occur, stop running the device immediately, cut off the power supply, and report to the service provider as soon as possible:
  - 1) Harsh noise heard during operation.
  - 2) Dust or water found in the machine.
  - 3) Unpleasant smell found during operation.

## 5. Delivery and Storage

- Avoid rain and snow, sun exposure and mechanical impact.
- The product should be stored in the original box. The box should be at least 15cm away from the floor, at least 50cm from the wall, heat source, cold source, window or air inlet.

## 6. Standard

### CE Marking

The CE marking indicates Functional Battery Door complies with the requirements of European Directive 2014/53/EU on Radio Equipment for:

- The protection of the health and the safety of the user and any other person.
- The protection requirements with respect to electromagnetic compatibility.
- And complies with harmonized standards.

## Environment (WEEE, Batteries and packaging)

This product is labeled in accordance with European Directives 2012/19/EU concerning Waste Electrical and Electronic Equipment (WEEE) and 2013/56/EC concerning Batteries and Accumulators. Those provisions are requiring producers and manufacturers to become liable for take-back, treatment and recycling upon end of life of equipment and batteries.

### THE PRODUCT



The crossed-out waste bin stuck on the product or its accessories means that the product belongs to the family of electrical and electronic equipment, and waste batteries must not be thrown away but collected separately and recycled. Please contact your retailers for more detailed information about the compliance solution in place for disposing of your old product and used batteries.

Packaging waste must also be collected separately to assure a proper disposal and recycling.

In this way you can participate in the re-use and upgrading of Electrical and Electronic Equipment Waste, which can have an effect on the environment and human health.



“INGENICO is a trademark of BANKS AND ACQUIRERS INTERNATIONAL HOLDING. This Document is Copyright © 2024 BANKS AND ACQUIRERS INTERNATIONAL HOLDING. BANKS AND ACQUIRERS INTERNATIONAL HOLDING retains full copyright ownership, rights and protection in all material contained in this document. The recipient can receive this document on the condition that he will keep the document confidential and will not use its contents in any form or by any means, except as agreed beforehand, without the prior written permission of BANKS AND ACQUIRERS INTERNATIONAL HOLDING. Moreover, nobody is authorized to place this document at the disposal of any third party without the prior written permission of BANKS AND ACQUIRERS INTERNATIONAL HOLDING. If such permission is granted, it will be subject to the condition that the recipient ensures that any other recipient of this document, or information contained therein, is held responsible to BANKS AND ACQUIRERS INTERNATIONAL HOLDING for the confidentiality of that information. Care has been taken to ensure that the content of this document is as accurate as possible. BANKS AND ACQUIRERS INTERNATIONAL HOLDING however declines any responsibility for inaccurate, incomplete or outdated information. The contents of this document may change from time to time without prior notice, and do not create, specify, modify or replace any new or prior contractual obligations agreed upon in writing between BANKS AND ACQUIRERS INTERNATIONAL HOLDING and the user. BANKS AND ACQUIRERS INTERNATIONAL HOLDING is not responsible for any use of this device, which would be non-consistent with the present document. All trademarks used in this document remain the property of their rightful owners”

[www.ingenico.com](http://www.ingenico.com)

13-17 rue Pagès, 92150 Suresnes – France

Banks and Acquirers International Holding, SAS / 814 767 216 RCS Nanterre