

# SELF/2000

Compact, attractive and scalable contactless payment solution for your self-service business



- Accept alternative QR code based-payment thanks to its embedded camera
- Improve the customer experience with best-in-class features such as color screen, camera and sound alert
- Simplify solution integration, operation and scalability
- Cut complexity in payment security implementation with PIN on Glass (PoG)



The Self/2000 is the best-in-class secured contactless terminal, which has been designed to growth your self-service business



**Focus on contactless acceptance and QR-code based payment**

**Ruggedized:**

- Designed for intensive use cases: IK09
- Indoor our outdoor: IP65

**Easy integration into a machine from the front or from the rear**

**Highest level of security with PCI PTS certification**

**Modularity:**

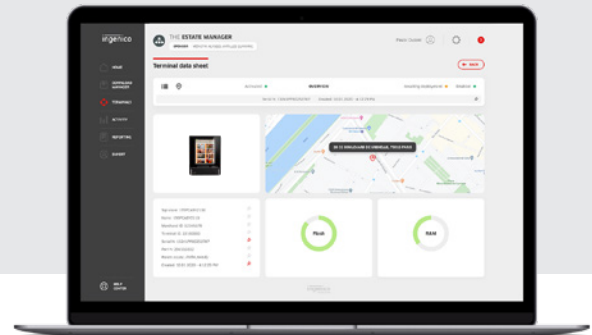
- Add-on boxes to build the desired configurations (MDB, 4G, BT)
- Upgradeable in the field

**Ergonomic interface:**

- Easy-to-use customer interface thanks to a simple UI
- Color and capacitive touch screen

**Supported by Ingenico's suite of service**

- Fleet management & security solutions
- Hardware services
- Professional services



<b>Processor / OS</b>	• Cortex A5 - Telium TETRA	✓
<b>Memory</b>	• 512 MB Flash, 512 MB RAM • MicroSD up to 32GB	✓ ✓
<b>SAM</b>	• 2xSAM ID-000	✓
<b>Contactless reader</b>	• EMV Level 1 compliant / ISO 14443 A/B/B'	✓
<b>Display</b>	• 3.26" color, QVGA (240x320)	✓
<b>Touchscreen</b>	• Capacitive - 6mm glass thickness	✓
<b>Keypad</b>	• Virtual keyboard on screen	✓
<b>Audio</b>	• Buzzer Monotone • Wav sound (thru external speaker)	✓ ✓
<b>Camera</b>	• 2MP - fixed focal (Honeywell library embedded)	✓
<b>Terminal connectivity</b>	• Ethernet 10/100, 1 x RJ45 LAN port • 4G (with fallback 3G/2G) • Bluetooth 4.2	✓ Option Option
<b>Terminal connections</b>	• 1 x USB Slave • 2 x USB Host • 2 x RS232 • 1 x connector for external loudspeaker • 1 x MDB Master + 1 x MDB Slave	✓ ✓ ✓ ✓ Option

<b>Security</b>	• PCI PTS 5.1 certified • PIN on Glass certified	✓ ✓
<b>IP</b>	• IP 65	✓
<b>IK</b>	• IK 09	✓
<b>Power supply</b>	• 9-16 V DC (light sleep mode) • 10-45V DC with optional Add-on box	✓ Option
<b>Terminal size</b>	• EVA EPS - Standard Door Module • 85 (W) x 107 (H) x 99.2 (D) mm (3.3x4.2x3.9")	✓ ✓
<b>Weight</b>	• 340 g (12 oz)	✓
<b>Environment</b>	• -20°C to +70°C (-4°F to 158°F) - Operating • -20°C to +70°C (-4°F to 158°F) - Storage • 95% non-condensing at +55°C (131°F)	✓ ✓ ✓
<b>Mounting in the kiosk</b>	• From outside without EVA plate • From inside with EVA plate	✓ ✓
<b>Accessory</b>	• Adapter cable for standard 12V PSU • EVA EPS mounting steel plate • USB cables, serial cables... • PSU 12V DC...	✓ ✓ Option Option
<b>Add-on boxes</b>	• POWER add-on box (slot#1) • MDB add-on box (slot#2) • 4G + BT add-on box (slot#2)	Option Option Option



www.ingenico.com

ingenico