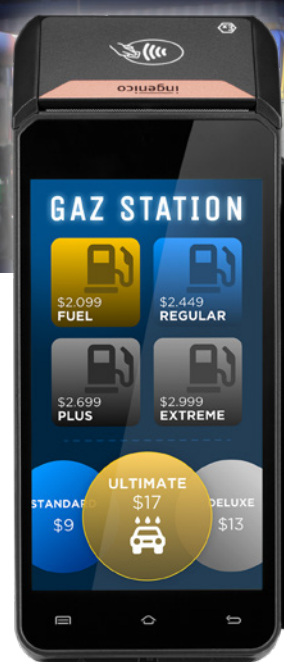


AXIUM DX8000 ATEX

Promote your services through your payment terminal located in the store of your gaz station



- Advanced check-out experience in store in potentially explosive atmospheres thanks to ATEX certification
- Fresh business opportunities with leading-edge Android apps under Android 10
- High-level performance with a long-lasting battery, 5.5" screen, and front and rear cameras
- Supported by AXIUM platform to unlock the full potential of digital commerce





Based on Android 10, the AXIUM DX8000 ATEX offers a best-in-class digital experience in-store, while answering the top-level security in petrol environment.

The power of Android 10 Harness the power of the Appstore.

Powerful processing to increase speed and output

- Boosted memory (Up to 2GB RAM 16GB FLASH)
- High speed processor (ARM Quad-core cortex A53)

Large 5.5" touchscreen and ergonomic interface

All method of payments accepted EMV Chip & PIN, contactless, magstripe or digital wallets and QR-code based payment

Powerful cameras

- Front camera (0.3MP)
- Rear camera (5MP)

Fast integrated printer

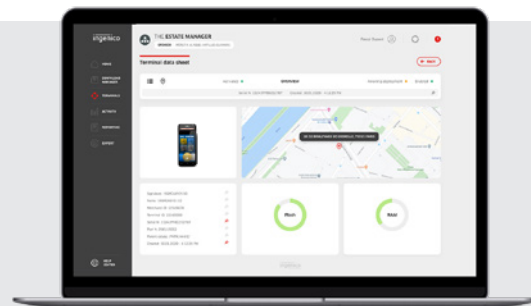
Long-lasting battery for the lengthy working day (3350mAh, 24.12Wh)

Raising the bar on security with PCI PTS v6

ATEX certified for Cat 3 (Zone 2) II 3 G Ex ic IIA T3 Gc

Supported by Ingenico's suite of services

- Fleet management & security solutions
- Hardware services
- Professional services



Processor	• Application processor	• 64-bit ARM, Cortex Quad-core A53, 1.3GHz	✓
	• Crypto processor	• 32-bit ARM, security core SC300, 192MHz	✓
Memory	• Internal	• 8GB Flash, 1GB RAM (Default) • 16GB Flash, 2GB RAM (Option)	✓ Option
	• External	• MicroSD Card slot	✓
Card readers	• Magnetic card reader	• Support ISO 1/2/3 track data, bi-directional	✓
	• Smart card reader	• Swiping	✓
	• NFC/Contactless	• EMV Contactless L1 3.0 spec compliant; support ISO / IEC 14443 Type A / B	✓
SAM / SIM slots	• 4 slots (SAM + SIM)	• 2 SIM + 2 SAM • 1 SIM + 3 SAM	✓ Option
Merchant display	• Color / Capacitive MultiTouch	• 5.5" HD, 1280 × 720 pixels	✓
Printer	• Integrated thermal printer	• Diameter:40mm	✓
Keys & Keypad	• Power key & volumes keys	• 1 Power key & 2 volumes keys	✓
	• Capacitive screen keys	• Physical screen keys: Menu, Home, Back	✓
Terminal wake-up	• Wake-up gesture	• Double click capacitive screen to wake up the terminal system	✓

Audio	• Support audio play • Headphone	• Support audio play • USB-C	✓
Connectivity	• WAN	• 4G fallback 3G and GPRS	✓
	• LAN	• Bluetooth 4.2 & BLE • IEEE8.2.11 b/g/n, 2.4G • IEEE8.2.11 a/b/g/n/ac, 2.4G and 5G	✓ ✓ Option
Connections	• USB	• USB Type C	✓
Data capture	• Front camera	• 0.3M, fixed focus camera, code scanning	✓
	• Rear camera	• 5M, autofocus, flash, code scanning	✓
Battery	• Li-ion	• 3350mAh / 7.2V, 24.12 Wh	✓
Size	• Terminal only	• 198 × 83 × 62.5 mm	✓
Weight	• Terminal + Battery	• 455g	✓
Environment	• Operating Temperature	• -10°C to +50°C (14°F to 122°F)	✓
	• Storage Temperature	• -20°C to +70°C (-4°F to 158°F)	✓
	• Operating Humidity	• 10% to 90% non-condensing	✓
Security		• PCI PTS 6.x	✓
		• ATEX Zone 2 Cat 3	✓

