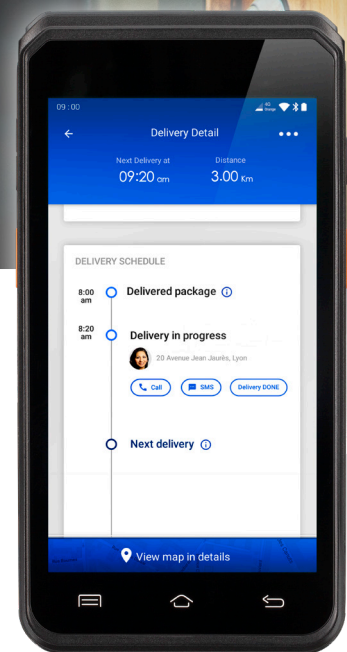


AXIUM EX6000

Mobile payment and commerce solution for any business on the go



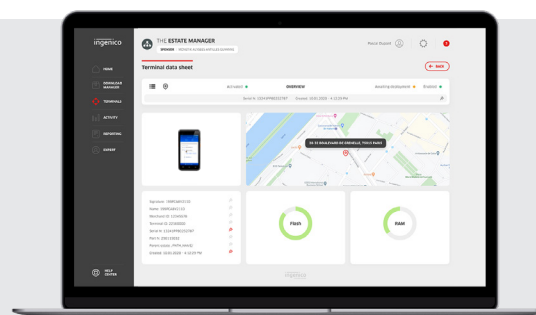
- Pocket-sized Smart POS powered by Android 10 for digital experience everywhere
- Leading-edge Android apps to support business on the go
- Top-level security with Android & PCI PTS V6 compliancy
- Supported by AXIUM platform to unlock the full potential of digital commerce





The AXIUM EX6000 brings a high-mobility digital payment acceptance solution to any mobile business.

- **The power of Android 10.**
Harness the power of the Appstore.
- **Small enough to carry**
in the pocket all day
- **Payment anywhere and anytime**
(4G, 3G, GPRS, Bluetooth and Dual band WiFi)
- **Large 5" touchscreen**
and ergonomic interface
- **Optimized battery** for a long business day
on the go (2930mAh, 11.28Wh)
- **Powerful processing to increase speed and output**
 - 2GB RAM, 16GB FLASH
 - High speed processor
(ARM Quad-core cortex A53)
- **Powerful rear camera (5MP)** and scanner (optional)
- **All methods of payment accepted**
(EMV Chip & PIN, contactless, magstripe or digital wallets and QR-code based payment)
- **Raising the bar on security** with PCI PTS v6



OS	• Android	• Android 10 Security OS	✓
Memory	• Internal • External	• 2GB RAM, 16GB FLASH • MicroSD Card slot	✓ ✓
Processor	• Application processor • Crypto processor	• 64-bit ARM, Cortex Quad-core A53, 1.3GHz • 32-bit ARM, security core SC300, 192MHz	✓ ✓
Card readers	• Magnetic card reader • Smart card reader • NFC/contactless	• Support ISO 1/2/3 track data, bi-directional swiping • EMV Contactless L1 3.0 spec compliant; support ISO / IEC 14443 Type A / B	✓ ✓ ✓
SAM /SIM slots	• 3 slots (SAM + SIM)	• 2 SIM + 1 SAM	✓
Display	• Color / capacitive multi-touch	• 5.0"HD, 1220 × 720 px	✓
Keys & Keypad	• Quick scan keys • Power key & volumes keys • Dedicated navigation keys	• Physical screen keys: Menu, Home, Back	✓
Terminal wake-up	• Wake-up gesture	• Double click capacitive screen to wake up the terminal system	✓

Audio	• Support audio play • Headphone	• USB-C	✓
Connectivity	• WAN • LAN	• 4G fallback 3G and GPRS • Bluetooth 4.2 support low energy • IEEE 802.11 a/b/g/n/ac 2.4GHz and 5GHz	✓ ✓ ✓
Connections	• USB	• USB-C	✓
Data capture	• Positioning • Rear camera • Scanner	• Tracking GPS, GLONASS, BEIDOU • 5MP, autofocus, flash, code scanning • Camera scanner with Honeywell library	✓ ✓ Optional
Battery	• Li-ion	• 2930mAh/3.85V, 11.28Wh	✓
Size	• Terminal only	• 5.91 × 3.03 × 0.67" (150 × 77 × 17 mm)	✓
Weight	• Terminal + battery	• 8.9oz (250g)	✓
Security	• PCI PTS V6		✓
Environment	• Operating temperature • Storage temperature • Operating humidity	• 14°F to 122°F (-10°C to +50°C) • -4°F to 158°F (20°C to +70°C) • 10% to 90% non-condensing	✓ ✓ ✓

