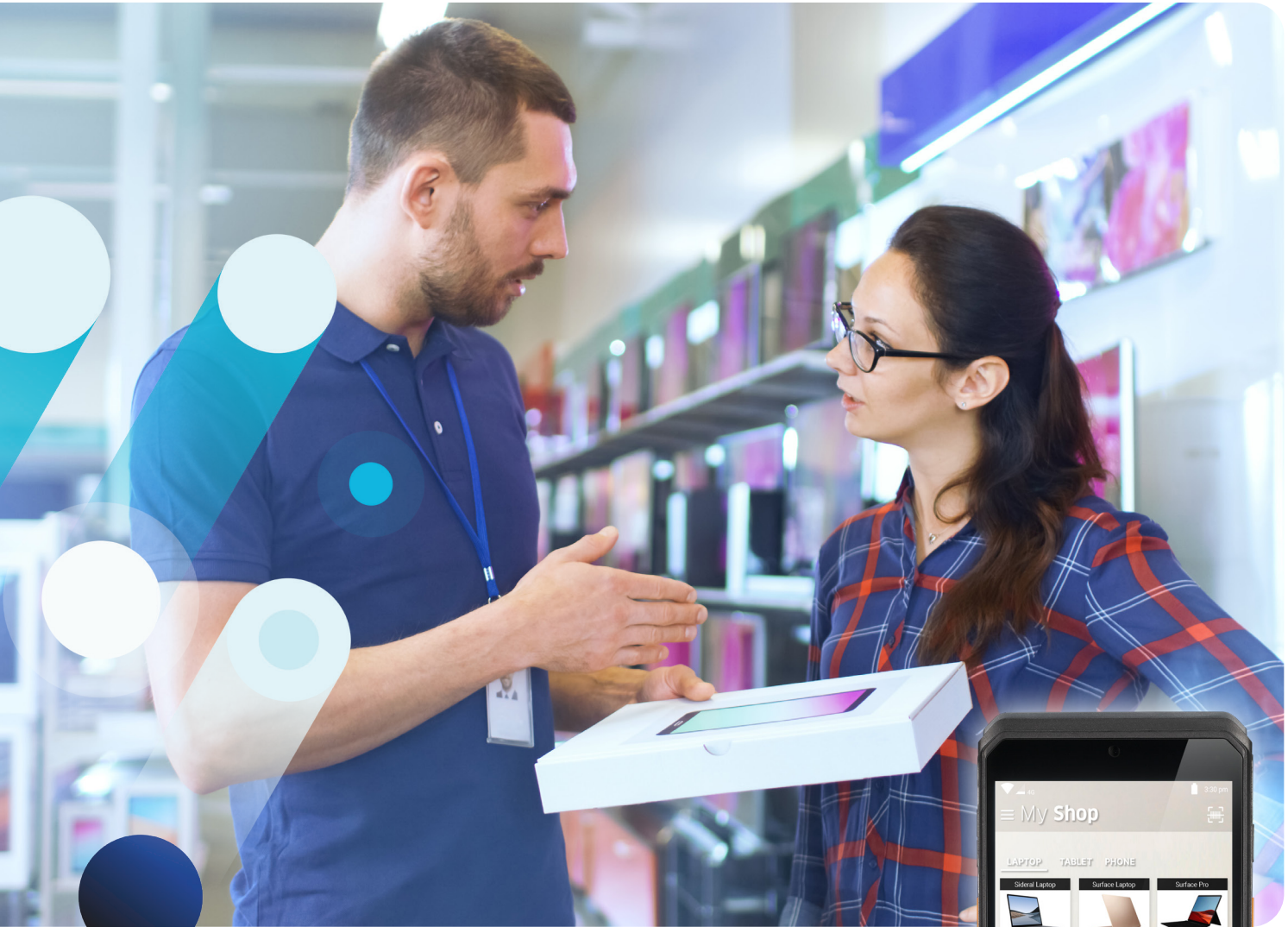
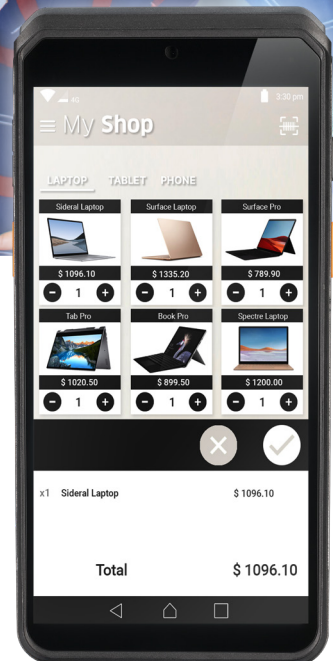


# AXIUM EX8000

Flexible mobile payment and commerce solution for your business



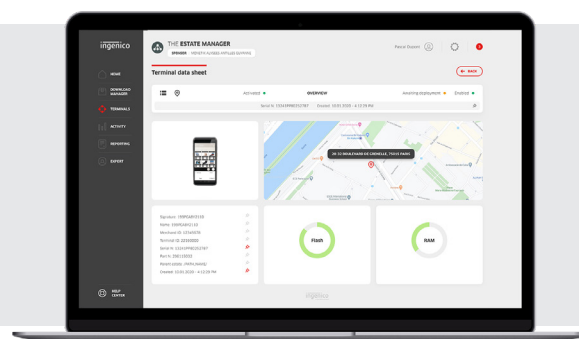
- Enterprise-grade features and accessories for payment and commerce use
- Compact business POS for easy checkout anywhere in store
- Fresh business opportunities with leading Android apps under Android 10
- High-level security with Android & PCI PTS V6 compliance
- Supported by AXIUM platform to unlock the full potential of digital commerce





The AXIUM EX8000 is the perfect answer for retailers who want to extend the digital payment experience throughout the entire point of sale.

- **The power of Android 10.**  
Harness the power of the Appstore.
- **Large 6" touchscreen** and ergonomic interface
- **Powerful processing to increase speed and output**
  - Boosted memory (With 3GB RAM & 32GB FLASH)
  - High speed processor (ARM Quad-core cortex A53)
- **Full range of accessories** such as protective holster and gang charger
- **High-end barcode reader**
- **Payment anywhere and anytime**  
(4G, 3G, GPRS, Bluetooth and WiFi)
- **Powerful cameras**
  - Front camera (2MP)
  - Rear camera (8MP)
- **Long-lasting battery** for the lengthy working day  
(up to 4040mAh, 15.55 Wh)
- **All methods of payment accepted** (EMV Chip & PIN, contactless, magstripe or digital wallets and QR-code based payment)
- **Raising the bar on security** with PCI PTS v6



|                  |  |   |   |
|------------------|--|---|---|
| OS               | • Android                                | • Android 10 Security OS  | ✓ |
| Memory           | • Internal                               | • 8GB Flash, 1GB RAM  | ✓ |
|                  | • External                               | • 16GB Flash, 2GB RAM<br>• MicroSD Card slot                                | ✓ |
| Processor        | • Application processor                  | • 64-bit ARM, Cortex Quad-core A53, 1.3GHz                                  | ✓ |
|                  | • Crypto processor                       | • 32-bit ARM, security core SC300, 192MHz                                   | ✓ |
| Card readers     | • Magnetic card reader                   | • Support ISO 1/2/3 track data, bi-directional swiping                      | ✓ |
|                  | • Smart card reader<br>• NFC/contactless | • EMV Contactless L1 3.0 spec compliant; support ISO / IEC 14443 Type A / B | ✓ |
| SAM /SIM slots   | • 4 slots (SAM + SIM)                    | • 2 SIM + 1 SAM   | ✓ |
| Display          | • Color / capacitive multi-touch         | • 6.0"HD+, 1440 × 720 px  | ✓ |
| Keys & Keypad    | • Quick scan keys                        | • Enables fast bar code scanning  | ✓ |
|                  | • Power key & volumes keys               | • 1 Power key & 2 volumes keys  | ✓ |
| Terminal wake-up | • Capacitive screen keys                 | • Virtual screen keys: Menu, Home, Back                                     | ✓ |
|                  | • Wake-up gesture                        | • Double click capacitive screen to wake up the terminal system             | ✓ |

|              |   |   |               |
|--------------|---|---|---------------|
| Audio        | • Support audio play                                | • Support audio play  | ✓             |
|              | • Headphone   | • USB-C   | ✓             |
| Connectivity | • WAN   | • 4G fallback 3G and GPRS   | ✓             |
|              | • LAN   | • Bluetooth 4.2 support low energy<br>• IEEE8.211 a/b/g/n/ac 2.4G and 5G  | ✓             |
| Connections  | • USB   | • USB-C   | ✓             |
| Data capture | • Positioning                                       | • Tracking GPS, GLONASS, BeiDou   | ✓             |
|              | • Front camera<br>• Rear camera<br>• Barcode reader | • 2MP, fixed focus, code scanning<br>• 8MP, autofocus, flash, code scanning<br>• Professional barcode reader (Zebra module) | ✓<br>Optional |
| Battery      | • Li-ion  | • 4040mAh/3.85V, 15.55 Wh   | ✓             |
| Size         | • Terminal only                                     | • 6.69 × 3.17 x .75" (170 × 80.6 × 19 mm)   | ✓             |
| Weight       | • Terminal + battery                                | • 10.22oz (290g)  | ✓             |
| Security     | • PCI PTS V6  |   | ✓             |
| Environment  | • Operating temperature                             | • 14°F to 122°F (-10°C to +50°C)  | ✓             |
|              | • Storage temperature                               | • -4°F to 158°F (20°C to +70°C)   | ✓             |
|              | • Operating humidity                                | • 10% to 90% non-condensing   | ✓             |

