

SELF/5000

Compact, engaging and scalable all-in-one payment solution for your self-service business



- Accept all payment methods including magstripe, EMV, NFC/Contactless and QR codes
- Easily integrate cashless payment with self-service business like vending or kiosks
- Simplify solution integration, operation and scalability



ingenico



Part of the Self series, the Self/5000 is the best-in-class secured contactless terminal, which has been designed to grow your self-service business (vending, EV charging...).



Highest security

Fully PCI PTS 5.x certified, the Self/5000 meets hardware and software mandatory requirements. It also complies with SRED and provides flexible options with add-on modules and open APIs. The virtual keyboard displayed on the screen makes the PIN entry easier.

All payment methods

The Self/5000 accepts all payment methods including magstripe, EMV and contactless. In addition, the device facilitates scanning for alternative payment methods including QR codes, etc.. This card reader has a customizable RGB light input which facilitates user guidance and reinforces the level of security.

Simple UI with sound alerts

The solution provides a simple and easy-to-use customer interface with the color and capacitive touch screen. By connecting an external speaker, the Self/5000 supports sound alerts and vocal guidance for enhanced usability.

Highly ruggedized

Due to its robust design (IK09) and protection against water and dust (IP44), the Self/5000 can be used in the most demanding indoor and qualified outdoor kiosk.

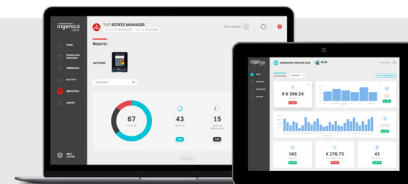
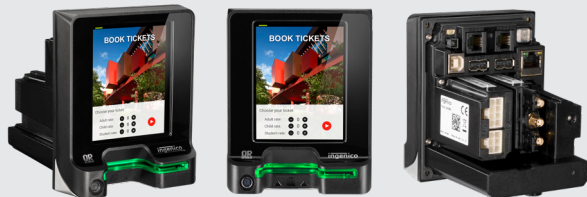
Easy mechanical integration & flexible solution

Thanks to its compact size and design, the Self/5000 can be integrated into a machine from the front or from the rear, depending on the machine design or the installer's choices. Compliant with EVA EPS (Standard Door Module) standard, the Self/5000 can easily replace the older solutions.

Wide connection capabilities

The Self/5000 extends its connection capabilities making it easier to integrate and add optional modules for enhanced flexibility, including MDB (for vending, parking and other use cases), and 4G connectivity.

Seamless integration with Ingenico's estate management



The Self/5000 is supported by our Cloud Services

Processor / OS	• Cortex A5 - Telium TETRA	✓
Memory	• 512 MB Flash, 512 MB RAM • MicroSD up to 32GB	✓ ✓
SAM	• 2xSAM ID-000	✓
Contactless reader	• EMV Level 1 compliant / ISO 14443 A/B/B	✓
Contact readers	• Hybrid card reader with shutter • RGB LEDs in reader's entry mouth • Smart card – EMV L1 – 500k reads lifespan • MSR ISO 1/2/3 – 500k reads lifespan	✓ ✓ ✓ ✓
Display	• 2.27" color IPS – 640 × 240 Wide angle viewing (+/- 180°)	✓
Keypad	• Mechanical 16 backlit keys keyboard	✓
Audio	• Buzzer Monotone • Wav sound (thru external speaker)	✓ ✓
Camera	• 2MP - fixed focal (Honeywell library embedded)	✓
Terminal connectivity	• Ethernet 10/100, 1 x RJ45 LAN port • 4G (with fallback 3G/2G)	✓ Optional
Terminal connections	• 1 x USB Slave • 2 x USB Host • 2 x RS232 • 1 x connector for external loudspeaker • 1 x MDB Master + 1 x MDB Slave	✓ ✓ ✓ ✓ Optional

Security	• PCI PTS 5.1 certified (No commissioning required) • PIN on Glass certified	✓ ✓
IP	• IP 44	✓
IK	• IK 09	✓
Power supply	• 9-16 V DC (light sleep mode) • 10-45V DC with optional Add-on box	✓ Optional
Terminal size	• EVA EPS - Standard Door Module • 3.3×4.2×4.3" (85 × 107.2 × 109.6 mm)	✓ ✓
Weight	• 22 oz (620 g)	✓
Environment	• -4°F to 158°F (-20°C to +70°C) - Operating • -4°F to 158°F (-20°C to +70°C) - Storage • 95% non-condensing at 131°F (+55°C)	✓ ✓ ✓
Mounting in the kiosk	• From outside without EVA plate • From inside with EVA plate	✓ ✓
Accessory	• Adapter cable for standard 12V PSU • EVA EPS mounting steel plate • USB cables, serial cables... • PSU 12V DC...	✓ ✓ Optional Optional
Add-on boxes	• POWER add-on box (slot#1) • MDB add-on box (slot#2) • 4G add-on box (slot#2)	Optional Optional Optional



www.ingenico.com

ingenico