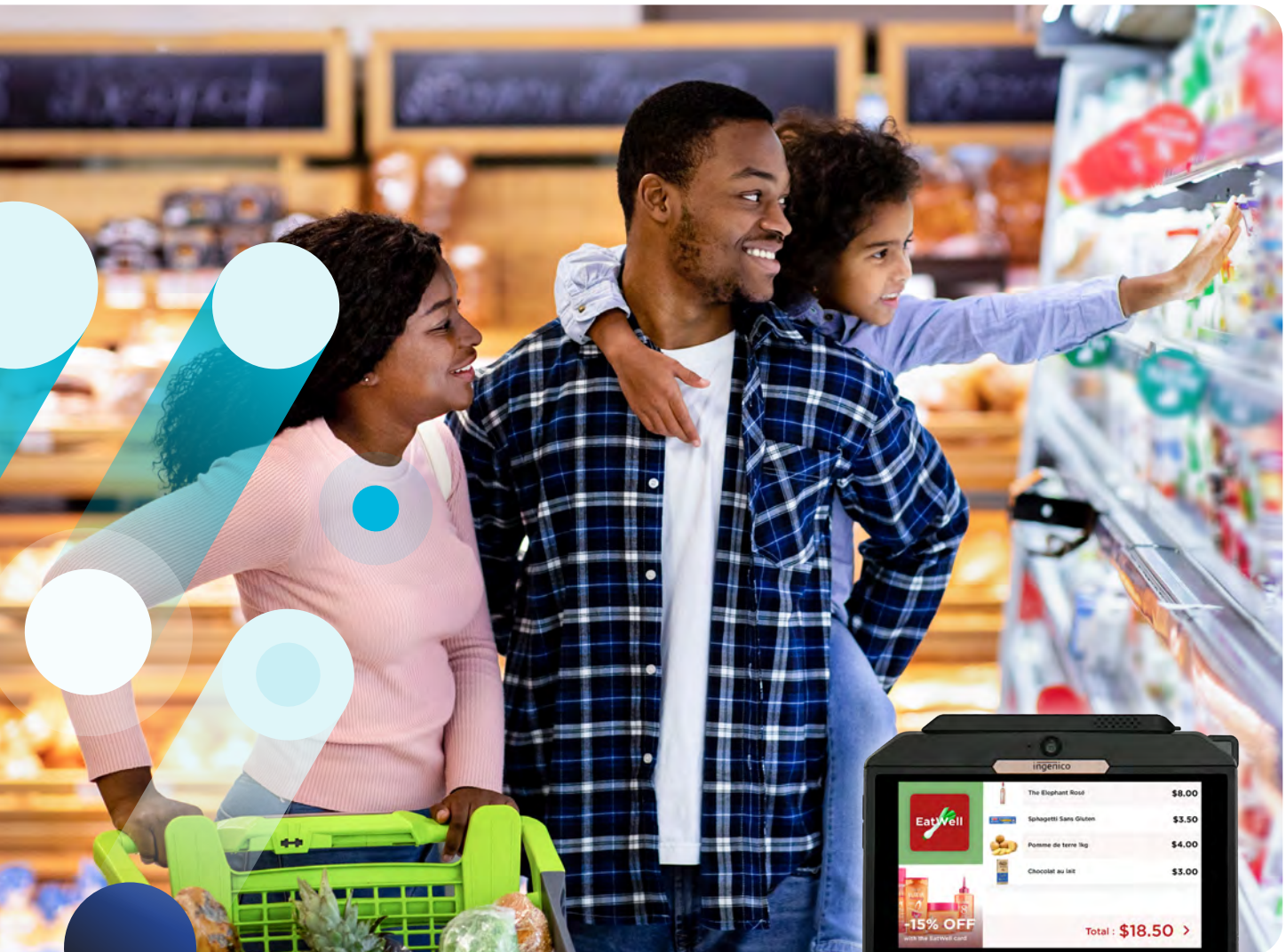


AXIUM RX7000

Deliver value-added services in multilane retail stores with a smart and customizable commerce solution



- Manage high volume transactions with a smart POS designed for intensive use
- Deliver next-level customer experience with advanced services, from Buy now, Pay later to warranty contract and personalised loyalty programmes
- Strengthen customer trust with next-generation security features, including PIN Shield, skimmer detection and detection of abnormal mono cable removal
- Ensure customers are served as quickly as possible with a semi-attended self-service kiosk equipped with AXIUM RX7000





Based on Android 11, the AXIUM RX7000 is designed for advanced check out services and an intensive use in full security.

The power of Android 11 Harness the power of the Appstore.

Powerful processing to increase speed and output

- Boosted memory (Up to 4GB RAM 32GB FLASH)
- High speed processor (ARM Quad-core cortex A55)

Large, up to 5.5" HD IPS and ergonomic interface

Powerful cameras

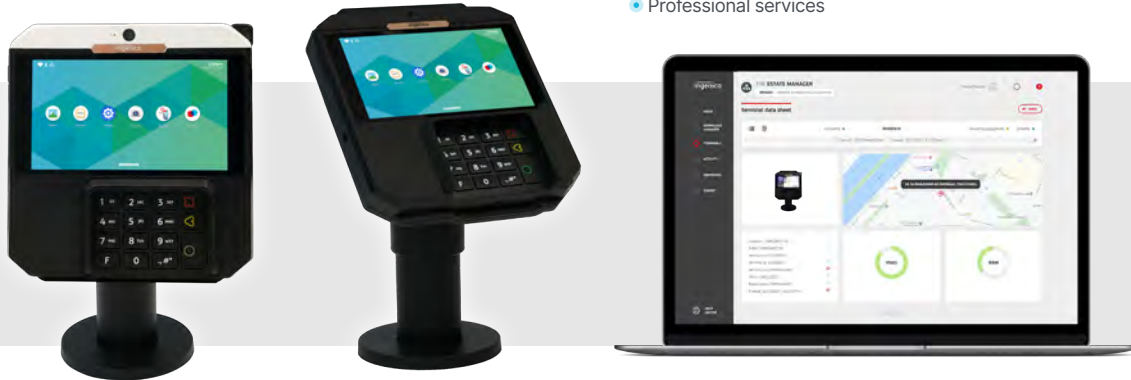
- Front camera (5MP)
- Rear camera (0.3MP)

Raising the bar on security

- PCI PTS v6
- Shimmer / skimmer detection
- Abnormal cable removal detection which can generate an alert to inhibit the terminal
- PCI compliant privacy pin shield

Supported by Ingenico's suite of services

- Fleet management & security solutions
- Hardware services
- Professional services



Processor	<ul style="list-style-type: none"> • Application processor • Crypto processor 	<ul style="list-style-type: none"> • 64-bit ARM, Cortex Quad-core A55, 1.8GHz • 32-bit ARM, security core SC300, 192MHz 	<ul style="list-style-type: none"> ✓ ✓
Memory	<ul style="list-style-type: none"> • Internal • External 	<ul style="list-style-type: none"> • 8GB Flash, 1GB RAM • 16GB Flash, 2GB RAM • 32GB Flash 4GB RAM • MicroSD Card slot 	<ul style="list-style-type: none"> ✓ Option Option
OS	<ul style="list-style-type: none"> • Android 	<ul style="list-style-type: none"> • Android 11 Security OS 	<ul style="list-style-type: none"> ✓
Card readers	<ul style="list-style-type: none"> • Magnetic card reader • Smart card reader • Contactless 	<ul style="list-style-type: none"> • Support ISO 1/2/3 track data, bi-directional swiping • Backlit indicator • EMV L1 and ISO7816 spec compliant • Backlit indicator • EMV Contactless L1 3.0 spec compliant; support ISO / IEC 14443 Type A / B • Backlit logo + 4 transaction LEDs 	<ul style="list-style-type: none"> ✓ ✓ ✓
SAM	<ul style="list-style-type: none"> • SAM slots 	<ul style="list-style-type: none"> • 2 slots 	<ul style="list-style-type: none"> ✓
Display & Touchscreen	<ul style="list-style-type: none"> • Color / capacitive multi-touch • Finger & stylus 	<ul style="list-style-type: none"> • 5.5"HD IPS, 1280 x 720 px, 16:9 • 1000K lifespan signature 	<ul style="list-style-type: none"> ✓ ✓
Keypad	<ul style="list-style-type: none"> • Virtual screen keys • Physical keys 	<ul style="list-style-type: none"> • Menu, Home, Back • 15 keys, raised markings, backlit 	<ul style="list-style-type: none"> ✓ ✓
Terminal wake-up	<ul style="list-style-type: none"> • Wake-up gesture 	<ul style="list-style-type: none"> • Double click capacitive screen to wake up the terminal system • By command send from the ECR 	<ul style="list-style-type: none"> ✓
Audio	<ul style="list-style-type: none"> • Speaker • Audio Jack • Buzzer 	<ul style="list-style-type: none"> • Dual channels 	<ul style="list-style-type: none"> ✓ ✓ ✓

Connectivity	<ul style="list-style-type: none"> • Wired • Wireless 	<ul style="list-style-type: none"> • Ethernet 10/100 base T • WiFi IEEE8.2.11 a/b/g/n 2.4G and 5G • Bluetooth 5.0, support BLE 	<ul style="list-style-type: none"> ✓ ✓ ✓
Connections	<ul style="list-style-type: none"> • IDMI 	<ul style="list-style-type: none"> • Power • USB Host • USB Device • RS232 • Ethernet 	<ul style="list-style-type: none"> ✓ ✓ ✓ ✓ ✓
Data capture	<ul style="list-style-type: none"> • Front camera • Rear camera and the Honeywell library 	<ul style="list-style-type: none"> • 5M pixels , autofocus, for photo/video • 0.3 pixels, fixed focus camera, for code scanning 	<ul style="list-style-type: none"> ✓ Option
Privacy shield	<ul style="list-style-type: none"> • Standard privacy shield 	<ul style="list-style-type: none"> • PCI compliant 	<ul style="list-style-type: none"> ✓
Stand Mounting	<ul style="list-style-type: none"> • Universal Payment Mount 		<ul style="list-style-type: none"> ✓
Size	<ul style="list-style-type: none"> • Terminal only 	<ul style="list-style-type: none"> • 151 x 163 x 27mm (5.9 x 6.4 x 1.1") 	<ul style="list-style-type: none"> ✓
Weight	<ul style="list-style-type: none"> • Terminal only 	<ul style="list-style-type: none"> • 650g (22.9oz) 	<ul style="list-style-type: none"> ✓
Security	<ul style="list-style-type: none"> • PCI • Shimmer / Skimmer detection • Anti-removal • Anti-theft 	<ul style="list-style-type: none"> • PCI PTS V6 compliant • Proximity sensor on surface of the keyboard* • Active connector removal • Kensington lock receptacle 	<ul style="list-style-type: none"> ✓ Option ✓ ✓
Environment	<ul style="list-style-type: none"> • Operating Temperature • Storage Temperature • Operating Humidity 	<ul style="list-style-type: none"> • -10°C to +45°C (14°F to 113°F) • -20°C to +70°C (-4°F to 158°F) • 10% to 90% non-condensing 	<ul style="list-style-type: none"> ✓ ✓ ✓
Accessories	<ul style="list-style-type: none"> • Height privacy shield • Signature stylus • POE Box 	<ul style="list-style-type: none"> • BITS pinshield • Passive stylus + holder + cord • Power over Ethernet 	<ul style="list-style-type: none"> Option Option Option

*Patent pending

