

AXIUM RX7000

Deliver value-added services in multilane retail stores with a smart and customizable commerce solution



- Manage high volume transactions with a smart POS designed for intensive use
- Deliver next-level customer experience with advanced services, from Buy now, Pay later to warranty contract and personalized loyalty programs
- Our implementation of the Android operating system brings a security layer that is compliant with PCI PTS and enables security updates
- The Axium platform includes a full range of payment devices and APIs for easy integration of value-adding applications



Retail chain



Restaurant chain



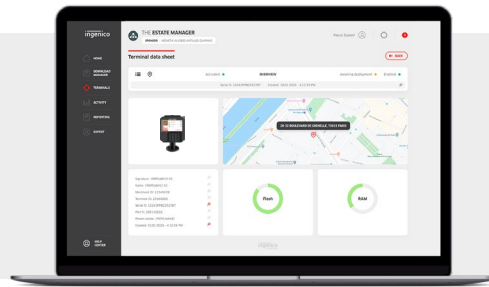
Healthcare



Based on Android 11, the AXIUM RX7000 is designed for advanced check out services and an intensive use in full security.

- **The power of Android 11**
Harness the power of business applications.
- **Powerful processing**
to increase speed and output
 - Upgraded memory (Up to 4GB RAM 32GB FLASH)
 - High speed processor (ARM Quad-core cortex A55)
- **Large 5.5" HD IPS**
with ergonomic interface

- **Powerful cameras**
 - Front camera (5MP)
 - Optional rear camera (0.3MP)
- **Raising the bar on security**
 - PCI PTS v6
 - Shimmer / skimmer detection
 - Abnormal cable removal detection which can generate an alert to inhibit the terminal
 - PCI compliant privacy pin shield



Processor	<ul style="list-style-type: none"> • Application processor • Crypto processor 	<ul style="list-style-type: none"> • 64-bit ARM, Cortex Quad-core A55, 1.8GHz • 32-bit ARM, security core SC300, 192MHz 	<ul style="list-style-type: none"> ✓ ✓
Memory	<ul style="list-style-type: none"> • Internal • External 	<ul style="list-style-type: none"> • 16GB Flash, 2GB RAM • 32GB Flash 4GB RAM • MicroSD Card slot 	<ul style="list-style-type: none"> ✓ Optional ✓
OS	<ul style="list-style-type: none"> • Android 	<ul style="list-style-type: none"> • Android 11 Security OS 	<ul style="list-style-type: none"> ✓
Card readers	<ul style="list-style-type: none"> • Magnetic card reader • Smart card reader • Contactless 	<ul style="list-style-type: none"> • Support ISO 1/2/3 track data, bi-directional swiping • Backlit indicator • EMV L1 and ISO7816 spec compliant • Backlit indicator • EMV Contactless L1 3.0 spec compliant; support ISO / IEC 14443 Type A / B • Backlit logo + 4 transaction LEDs 	<ul style="list-style-type: none"> ✓ ✓ ✓
SAM	<ul style="list-style-type: none"> • SAM slots 	<ul style="list-style-type: none"> • 2 slots 	<ul style="list-style-type: none"> ✓
Display & Touchscreen	<ul style="list-style-type: none"> • Color / capacitive multi-touch • Finger & stylus 	<ul style="list-style-type: none"> • 5.5" HD IPS, 1280 x 720 px, 16:9 • 1000K lifespan signature 	<ul style="list-style-type: none"> ✓ ✓
Keypad	<ul style="list-style-type: none"> • Virtual screen keys • Physical keys 	<ul style="list-style-type: none"> • Menu, Home, Back • 15 keys, raised markings, backlit 	<ul style="list-style-type: none"> ✓ ✓
Terminal wake-up	<ul style="list-style-type: none"> • Wake-up gesture 	<ul style="list-style-type: none"> • Double click on the capacitive screen to wake up the terminal • By command sent from the ECR 	<ul style="list-style-type: none"> ✓
Audio	<ul style="list-style-type: none"> • Speaker • Audio Jack • Buzzer 	<ul style="list-style-type: none"> • Dual channel 	<ul style="list-style-type: none"> ✓ ✓ ✓

Connectivity	<ul style="list-style-type: none"> • Wired • Wireless 	<ul style="list-style-type: none"> • Ethernet 10/100 base T • WiFi IEEE8.2.11 a/b/g/n 2.4G and 5G • Bluetooth 5.0, supports BLE 	<ul style="list-style-type: none"> ✓ ✓ ✓
Connections	<ul style="list-style-type: none"> • IDMI 	<ul style="list-style-type: none"> • Power • USB Host • USB Device • RS232 • Ethernet 	<ul style="list-style-type: none"> ✓ ✓ ✓ ✓ ✓
Data capture	<ul style="list-style-type: none"> • Front camera • Rear camera 	<ul style="list-style-type: none"> • 5M pixels , autofocus, for photo/video • 0.3 pixels, fixed focus camera, for bar code scanning 	<ul style="list-style-type: none"> ✓ Optional
Privacy shield	<ul style="list-style-type: none"> • Standard privacy shield 	<ul style="list-style-type: none"> • PCI compliant 	<ul style="list-style-type: none"> ✓
Stand Mounting	<ul style="list-style-type: none"> • Universal Payment Mount 	<ul style="list-style-type: none"> • Standardized mounting pattern 	<ul style="list-style-type: none"> ✓
Size	<ul style="list-style-type: none"> • Terminal only 	<ul style="list-style-type: none"> • 5.9 x 6.4 x 1.1" (151 x 163 x 27mm) 	<ul style="list-style-type: none"> ✓
Weight	<ul style="list-style-type: none"> • Terminal only 	<ul style="list-style-type: none"> • 22.9oz (650g) 	<ul style="list-style-type: none"> ✓
Security	<ul style="list-style-type: none"> • PCI • Shimmer / Skimmer detection • Anti-removal • Anti-theft 	<ul style="list-style-type: none"> • PCI PTS V6 compliant • Proximity sensor on surface of the keyboard* • Active connector removal • Kensington lock receptacle 	<ul style="list-style-type: none"> Optional ✓ ✓ ✓
Environment	<ul style="list-style-type: none"> • Operating Temperature • Storage Temperature • Operating Humidity 	<ul style="list-style-type: none"> • 14°F to 122°F (-10°C to +50°C) • -4°F to 158°F (-20°C to +70°C) • 10% to 90% non-condensing 	<ul style="list-style-type: none"> ✓ ✓ ✓
Accessories	<ul style="list-style-type: none"> • Signature stylus • POE Box • Flat stand mount 	<ul style="list-style-type: none"> • Passive stylus + holder + cord • Power over Ethernet • Desktop use 	<ul style="list-style-type: none"> Optional Optional Optional

*Patent pending

