

Lane/8000

Driving sleek, secure and smart checkout experiences



- Engage consumers with a large multimedia touchscreen and user-friendly HTML5 interface
- Quick and easy payment options to improve checkouts
- Integrate simply into any environment
- Help reduce PCI-DSS audit scope with seamless semi-integrated configuration options



ingenico



Designed for speed and efficiency, the Lane/8000 creates new points of consumer engagement that improve brand loyalty and drive additional sales.



All payment methods accepted including QR code payment thanks to an optional camera

Designed for fast checkout in retail:

- X-Large capacitive screen
- Clear contactless zone
- Large white backlit keypad
- Payment methods illuminated

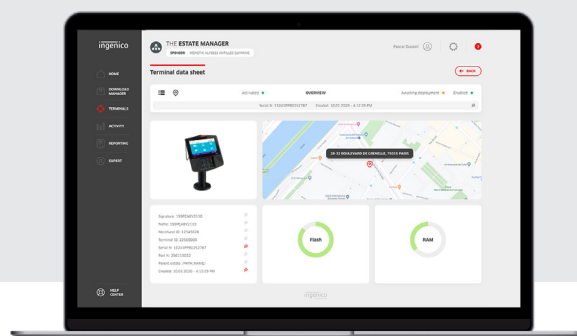
X-large 7" color touchscreen and ergonomic interface

Highest security:

- PCI PTS
- Optional PCI compliant privacy shield
- Detection of abnormal cable removal to alert and inhibit the terminal in the case of threat
- Anti-theft Kensington lock

Supported by Ingenico's suite of services

- Fleet management & security solutions
- Hardware services
- Professional services



Processor	• Crypto & Applications Processor	• Cortex A5	✓
Memory	• Internal • External	• 512 MB Flash, 512 MB RAM • Micro SD up to 32 GB	✓ Option
OS		• Telium TETRA HTML5	✓
SAM		• 3	Option
Card Reader(s)	• Magstripe (dual head) • Smart Card • Contactless	• ISO1/2/3, 500K reads lifespan • EMV Level 1, 500K reads lifespan • EMV Contactless L1 3.0 spec compliant	✓ ✓ ✓
Display	• Colour	• 7" backlight WVGA, TN* display (800x480)	✓
Touchscreen	• Capacitive	• Finger & stylus (1000K lifespan signature)	✓
Stylus	• Passive	• Tethered included	✓
Keypad		• 15 keys, raised markings, backlit	✓
Camera		• 5M pixels autofocus (QR code library embedded)	Option
Audio	• Buzzer • Audio Jack • Speaker	• Stereo • Mono	✓ Option Option

Terminal Connectivity	• Wired • Wireless	• Ethernet 10/100 base T • Ethernet switch • WIFI and Bluetooth	✓ Option Option
Terminal Connections	• USB • Serial • Powered USB • Powered RS 232 • Powered Ethernet • External Power Supply	• USB Host • 2nd USB Host • USB Slave • 1 RS232 • 12 V (USB retail) • 12 V • PoE 802.3af compliant	✓ ✓ ✓ ✓ ✓ Option Option
Stand Mounting		• Universal Payment Mount	✓
Terminal Size		• 200 x 205,5 x 44 mm (7,87" x 8,07" x 1,73")	✓
Weight		• 583g (20,56oz) • 796g (28,08oz)	✓
Environment	• Operating temperature • Storage temperature • Relative humidity	• 0 to +50°C (32°F to 122°F) • -20 to +70°C (-4°F to 131°F) • 85% HR at +40°C (104°F)	✓ ✓ ✓
Accessories	• Privacy shield	• PCI compliant	✓
Security	• PCI PTS • Anti-removal • Anti-theft	• PCI PTS 6.x and 5.x certified • Active connector removal • Kensington lock receptacles • Secure mounts available	✓ ✓ ✓ Option

* TN: Twisted Nematics

**AWVA: Angle Wide Vertical Aligned to provide a better viewing angle, better color depth and no grey inversion phenomenon



www.ingenico.com

ingenico