

Desk/2600

Simplicity at the heart of countertop payment



- All payment methods accepted. Optimized for seamless contactless payment
- Save counter space and speed up the checkout process by pairing with the Desk/1600 PIN Pad
- Connect any wired devices through the single MagicBox cable enabling a unified integration
- Ensure business continuity with a battery back-up

ingenico



With its nimble design, the Desk/2600 fits perfectly on any counter.



Optimized checkout time

- Multiple alternative payment methods supported
- Highlighted contactless zone
- Large keypad and display
- Paired with the Desk/1600, saving space and speeding up the checkout

Seamless integration with wired POS device

- MagicBox cable offering various wired connectivity including customer module for the Desk/1600

Maximized network availability

- Ethernet, Wi-Fi and 4G with dual SIM
- Battery back-up to cover power loss

Highest security

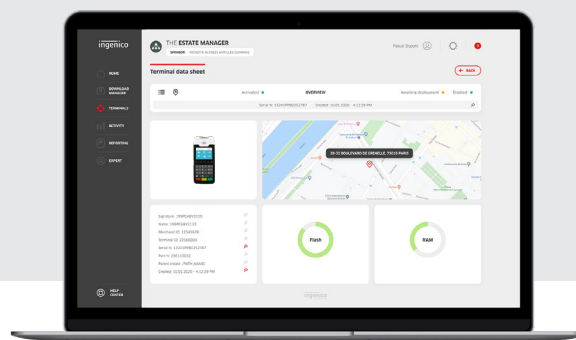
- PCI PTS v6
- Optional PCI compliant privacy shield
- Highest physical protection of sensitive data thanks to TETRA vault design

Eco design to reduce carbon footprint and control the use of natural resources

- Usage of components with low power consumption
- Usage of renewable and recycled materials

Supported by Ingenico's suite of services

- Fleet management & security solutions
- Hardware services
- Professional services



Processor	• Application & Crypto processor	• Cortex A7	✓
Memory	• Internal	• 256 MB Flash, 256 MB RAM	✓
OS		• Telium TETRA	✓
Card Reader(s)	• Magnetic card reader • Smart Card • Contactless	• ISO 1/2/3, 500K reads lifespan • EMV L1, 500K reads lifespan • EMV Contactless L1 3.0 spec compliant	✓ ✓ ✓
Display		• 2.8" backlight, glass lens, QVGA (320x240 pixels)	✓
Keypad	• Physical keys	• 15 keys, raised markings, backlit • 4 function keys	✓ ✓
Audio	• Buzzer		✓
Battery	• Back-up battery	• 500mAh	✓
Thermal printer	• Speed in l/s • Paper roll cage	• up to 24 l/s • 58 mm width x Ø 40 mm	✓ ✓
Terminal connectivity	• WAN	• WIFI w. WPS easy pairing • 4G (fallback GPRS) and / or 3G	Option Option

Terminal Connections	• USB	• USB-C	✓
Terminal Connections via Accessories	• Magic Box	• USB-C (device) • USB-C (power) • Ethernet (RJ45) • USB-B (slave) • USB-A (host) • USB-A (option) • RS-232 converter • PSTN modem	Option Option Option Option Option Option Option Option
Terminal Size	• Terminal full option without PINshield	• 179x77.4x55 mm (7.04x3.05x2.16")	✓
Terminal Weight	• Terminal only	• 285g (10.05oz)	✓
Environment	• Operating temperature • Storage temperature • Relative humidity	• 0 to +45°C (32°F to 113°F) • -20 to +50°C (-4°F to 122°F) • 85% HR at +40°C (104°F)	✓ ✓ ✓
Security	• PCI PTS • Privacy shield	• PCI PTS V6 compliant • PCI compliant (factory mounted)	✓ Option



www.ingenico.com

ingenico