

The Estate Manager

Leverage the full potential of your estate
to support merchant success

ingenico



| The growing complexity of estate management

Today's estate management is becoming more and more complex as acceptance points proliferate and regulatory pressure intensifies. That's where the Estate Manager can help. It offers a flexible and versatile solution to help you manage in real-time a diverse range of payment terminals and security protocols, simply and efficiently.

The Estate Manager helps you maintain full control of your estate on a daily basis, enabling you to monitor and manage the configuration and behaviour of all terminals in your estate at all times.

Looking to create new revenue streams? The Estate Manager allows you to offer services that enhance customer engagement, while controlling your estate management costs.

With Ingenico's Estate Manager:

- **Never lose track** of your terminal thanks to our geofencing technology
- **Keep devices secure and updated** for business-critical transactions with our next-generation Mobile Device Management
- **Deploy new services** with a range of new downloadable business applications
- **Optimize business** decisions and take control of your TCO



Keep control of your estate at your fingertips to fully manage the terminal's lifecycle and optimise your TCO



Manage and secure

Make sure your terminals always up to date with the latest software applications, OS releases and security keys. Change your terminal parameters whenever you need.



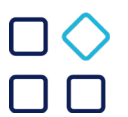
Track and control

Manage anytime and efficiently your fleet with MDM, geofencing and real-time synchro.



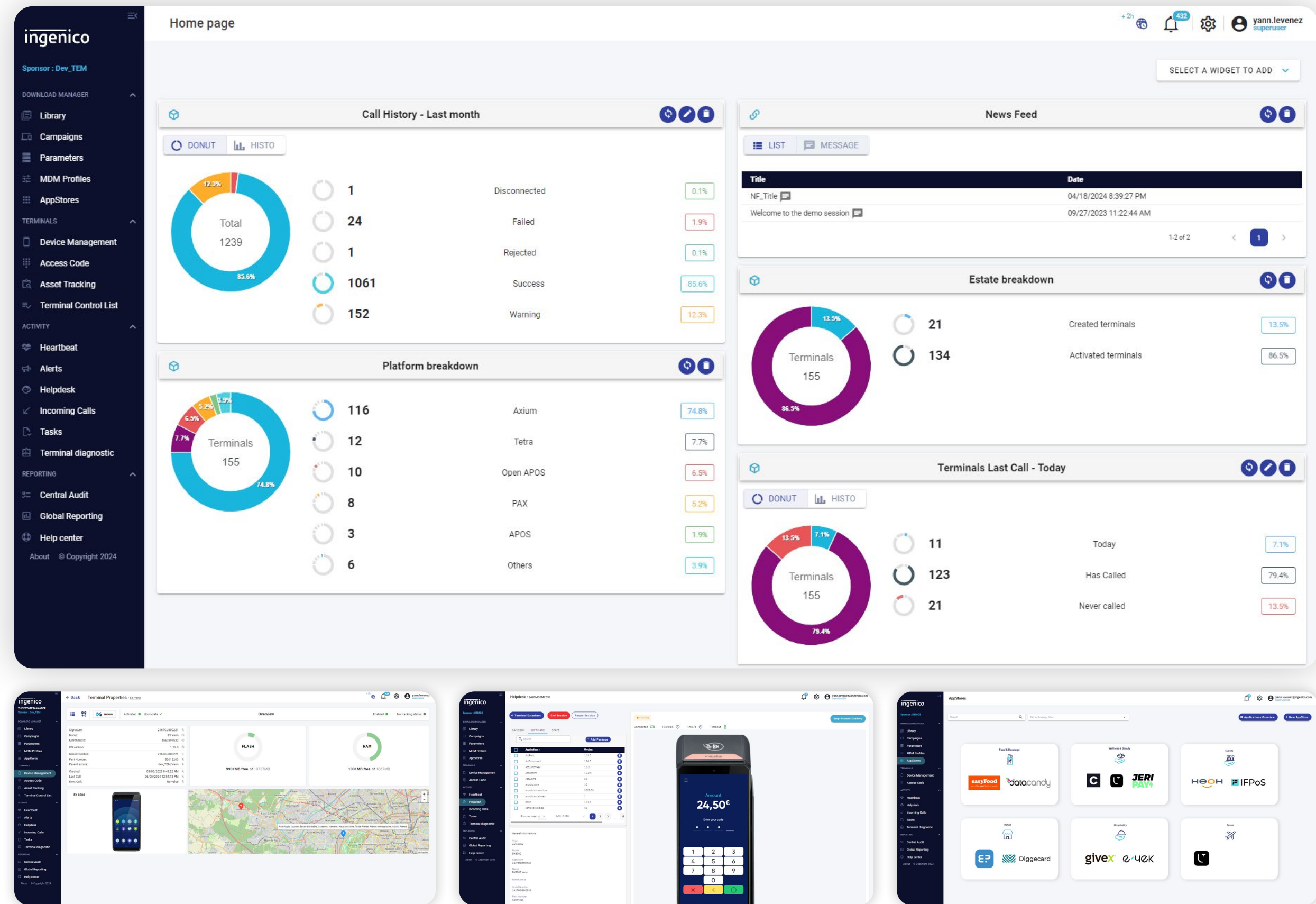
Support your merchants

Improve your remote maintenance and better monitor the health of your estate using terminal diagnostics, remote desktop features and real-time synchro.



Deploy new services

Our Appstore makes it easy for your merchants to install on their terminals the applications that you have curated for their business development.



A two-level offer with modular functionalities

	Core Offer	Advanced Offer
Software applications download	✓	✓
Parameters management	✓	✓
OS update	✓	✓
Support of non-Ingenco terminals	✓	✓
MDM for Android	✓	✓
Real-time synchro	✓	✓
REST APIs for integration	✓	✓
Remote Key Injection		✓
Remote Helpdesk		✓
Multimedia Content Management		✓
Heartbeat and alerting		✓
Asset tracking		✓
App Store		✓
Terminal Diagnostic		✓

Eliminate technical complexity and variable costs by opting for SaaS or BPO hosted operations and entrusting your estate management to Ingenico experts. The Estate Manager will allow you to focus on your core activities and accelerate the business of your merchants!



Moving Commerce Forward

Ingenico is the global leader in payment acceptance and services. We support our customers, and their customers to do more with payments. Active in 37 countries, with over 3,500 employees we have been at the forefront of the commerce landscape for over four decades.

With more than 40 million payment devices deployed worldwide, powered by over 2,500 apps, the company is servicing the needs of millions of consumers every day. Through our advanced integrated solutions and network of partnerships, we simplify the world of payments and bring value added services to move commerce forward.